

The race is on!

The race is on !

Michael Green, Vancouver, at
WCTE 2012, Auckland, NZ

E18-Idee&Projekt UG
J.Glogau.
Konstruktion: CLT, HRB.
Picture: Kaden Klingbeil
Architects

Holz8 – B&O Mietraching.
Konstruktion: CLT, HRB.
Picture: Huber&Sohn

Holz4 – B&O Mietraching.
Konstruktion: CLT, HRB.
Picture: Huber&Sohn



The race is on !

Michael Green, Vancouver,
WCTE 2012, Auckland, NZ



Actual the lead: Melbourne, Australia. Construction: CLT. picture:
Lend Lease

New champion? Bergen,
Truss Frame and modules Picture: bob/artec/sweco

Norway







+ size ?

+ architecture ?

+ height ?

+ resource - efficiency?

+ innovation?

+ robustness ?

+ ease of building requirements ?

+ structure ?

+ quality ?

+ risks?

+ life cycle assessment?

+ prefabrication?

+ costs?

+ sustainability?

+ energy - efficiency?

+ constructions?

+what else ?













木口



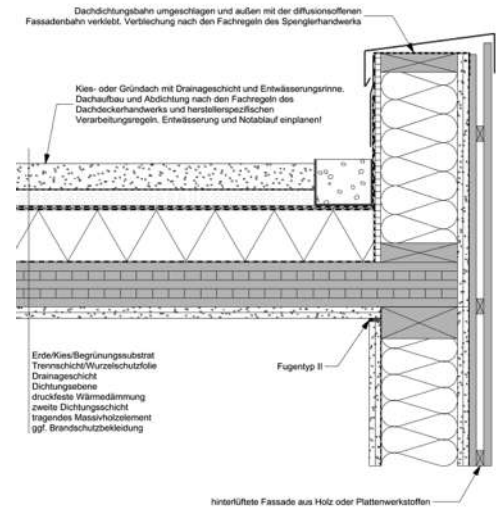
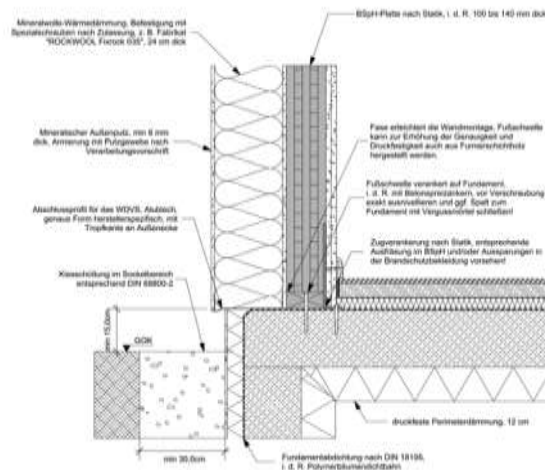
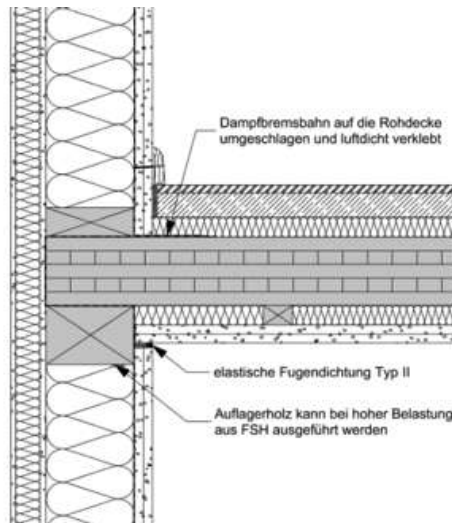
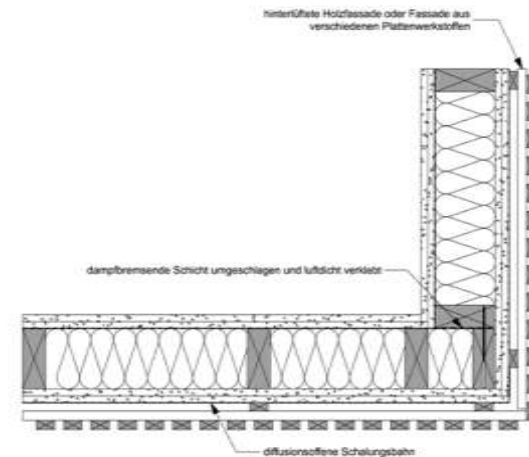
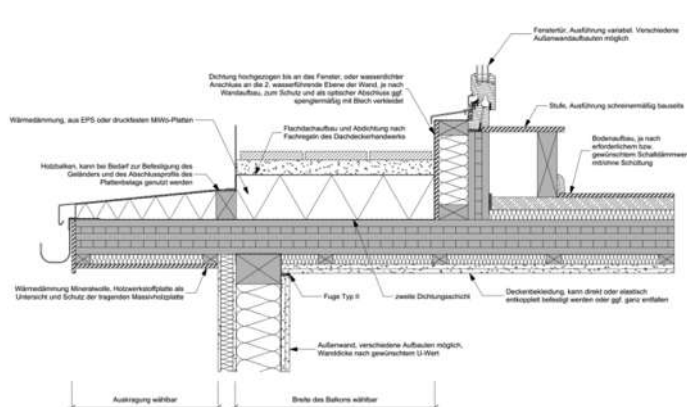
2010/10/08 11:56







Details, details, details and again details – standardised!





Huber & Sohn GmbH, Bachmehring





26.04.2010



27.04.2010



28.04.2010



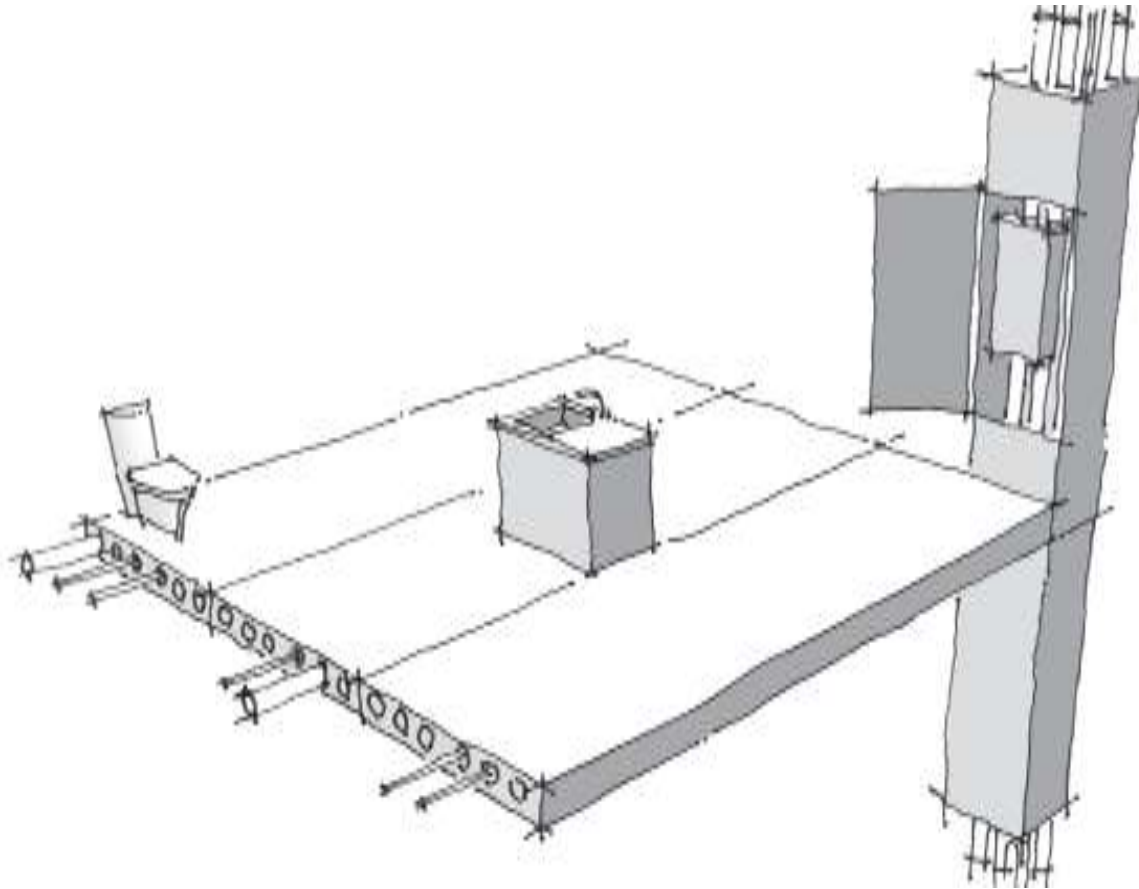






halbyggarna
jonsereds
GTESON TOWER MED TRAVERS

The image shows a multi-story building under construction. A large white banner is draped across the top of the structure, featuring the text 'halbyggarna jonsereds' and 'GTESON TOWER MED TRAVERS'. The building is surrounded by a complex network of metal scaffolding and cranes. The ground in the foreground is covered with construction materials, including green and white tarps, and a yellow container. The sky is blue with scattered white clouds.



What we don't like !







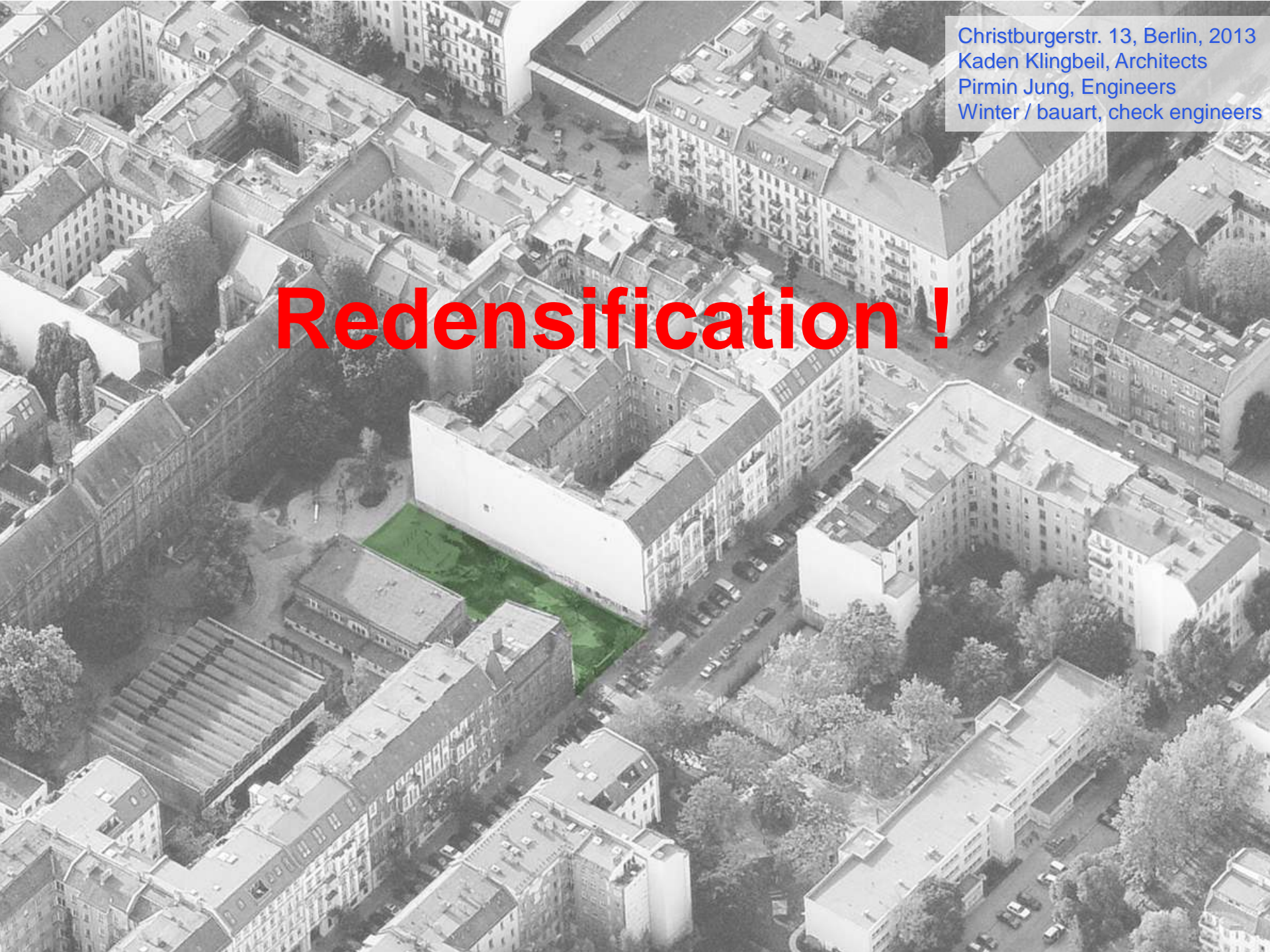




kaden+klingbeil architekten





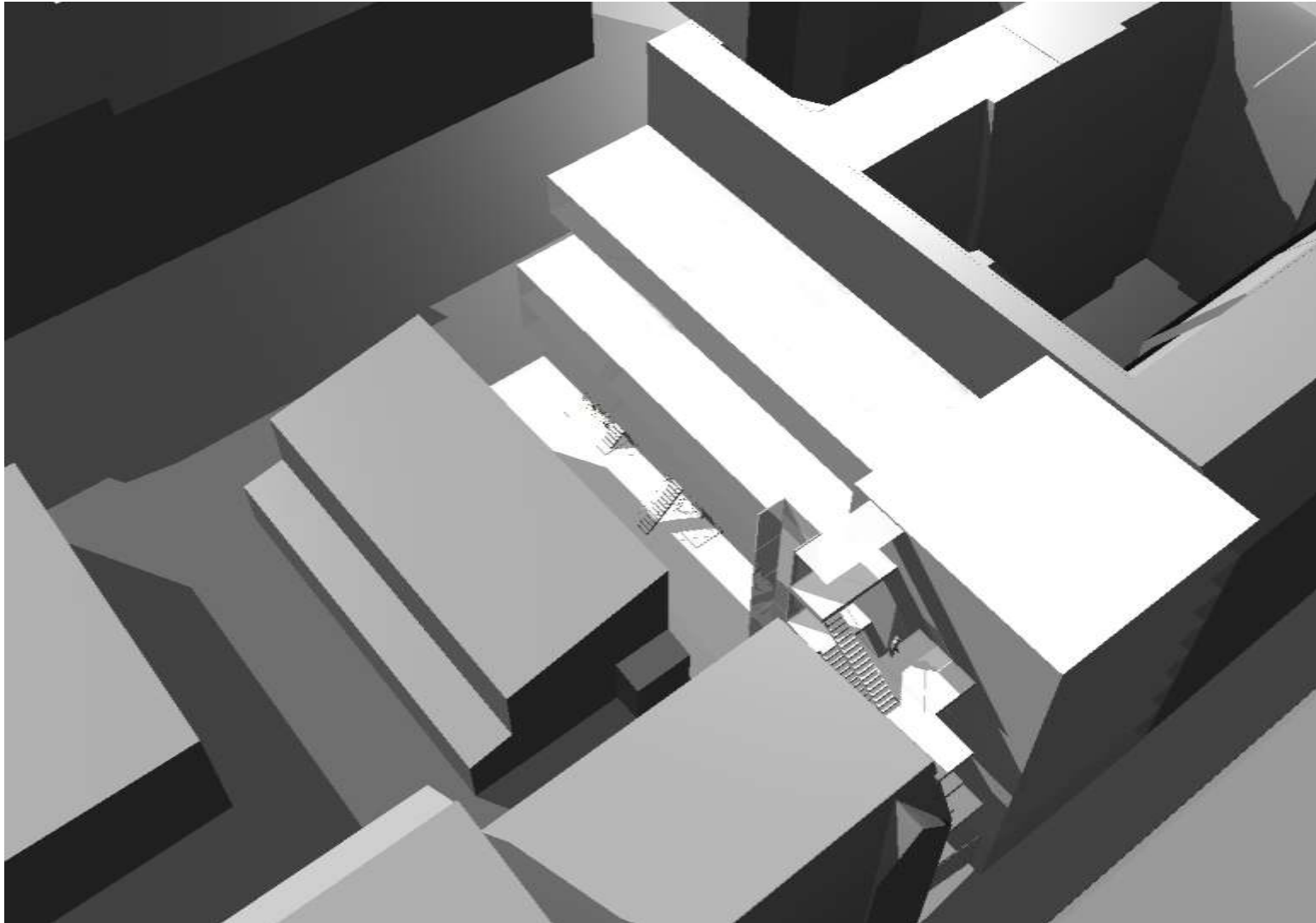
An aerial photograph of a dense urban neighborhood in Berlin. The image shows a grid of multi-story residential buildings with varied rooflines and colors. A specific plot of land, located in the center-left of the image, is highlighted in a bright green color, indicating a site for redensification. The surrounding area is filled with trees, streets, and parked cars, providing a context for the proposed development.

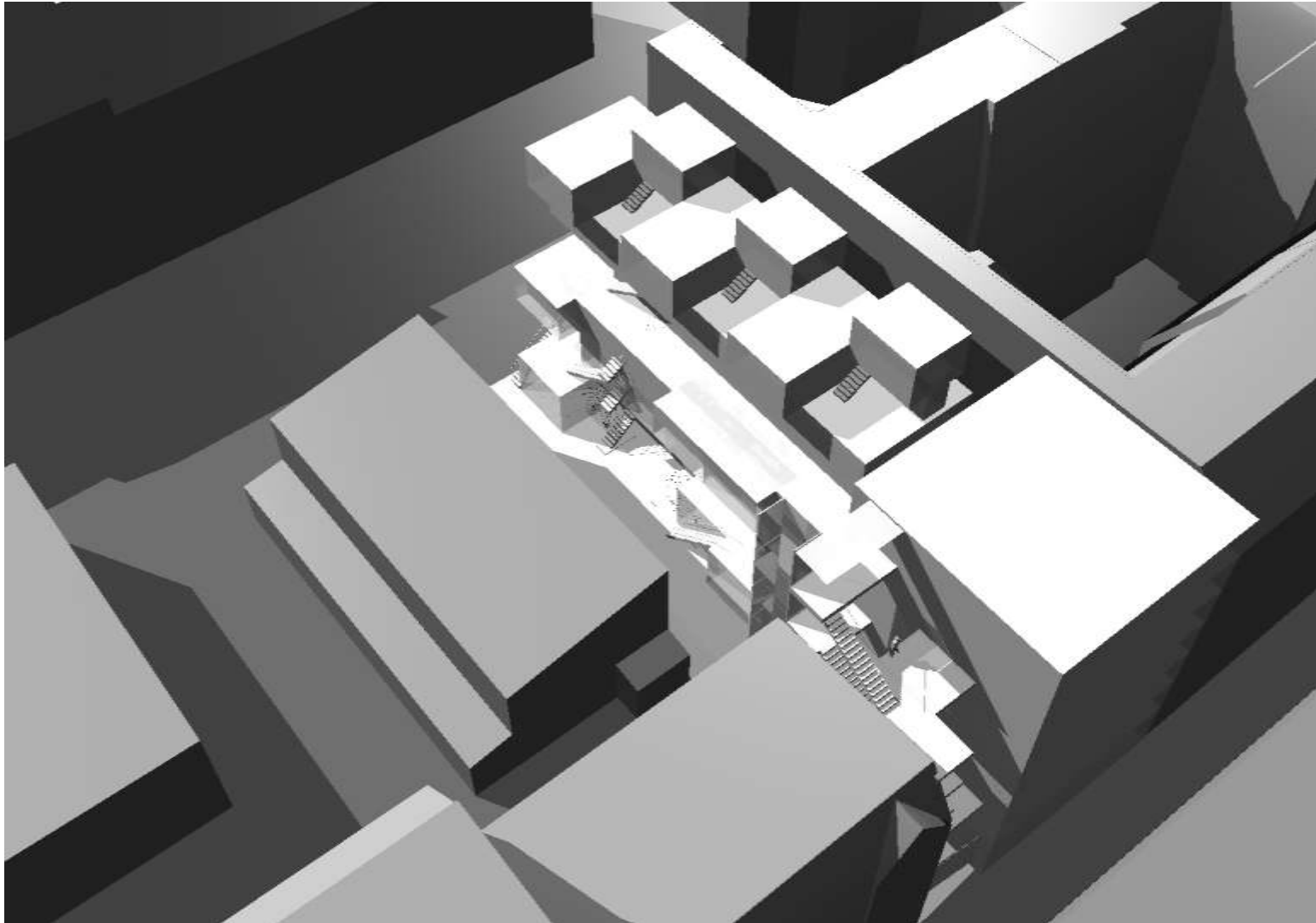
Christburgerstr. 13, Berlin, 2013
Kaden Klingbeil, Architects
Pirmin Jung, Engineers
Winter / bauart, check engineers

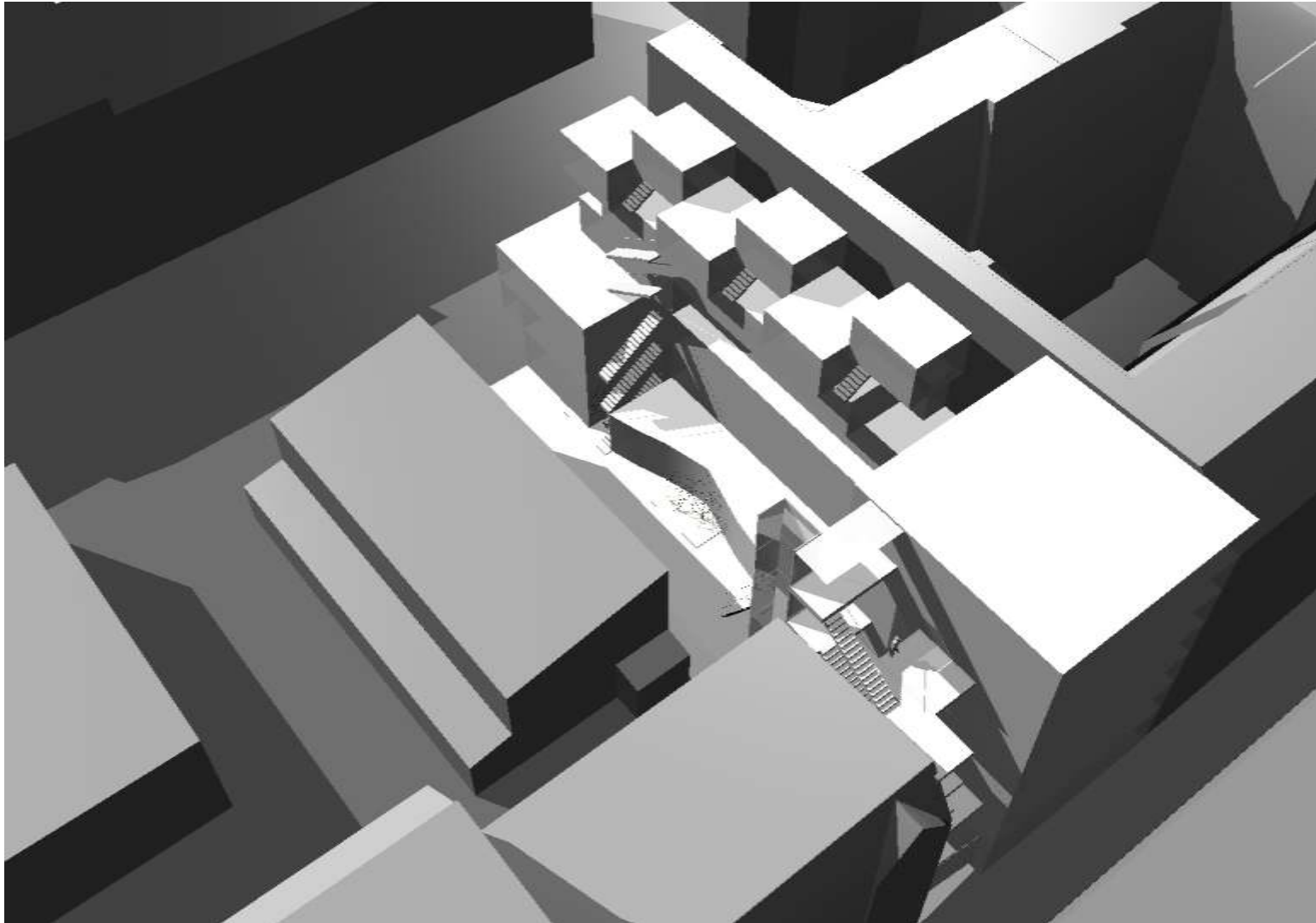
Redensification !

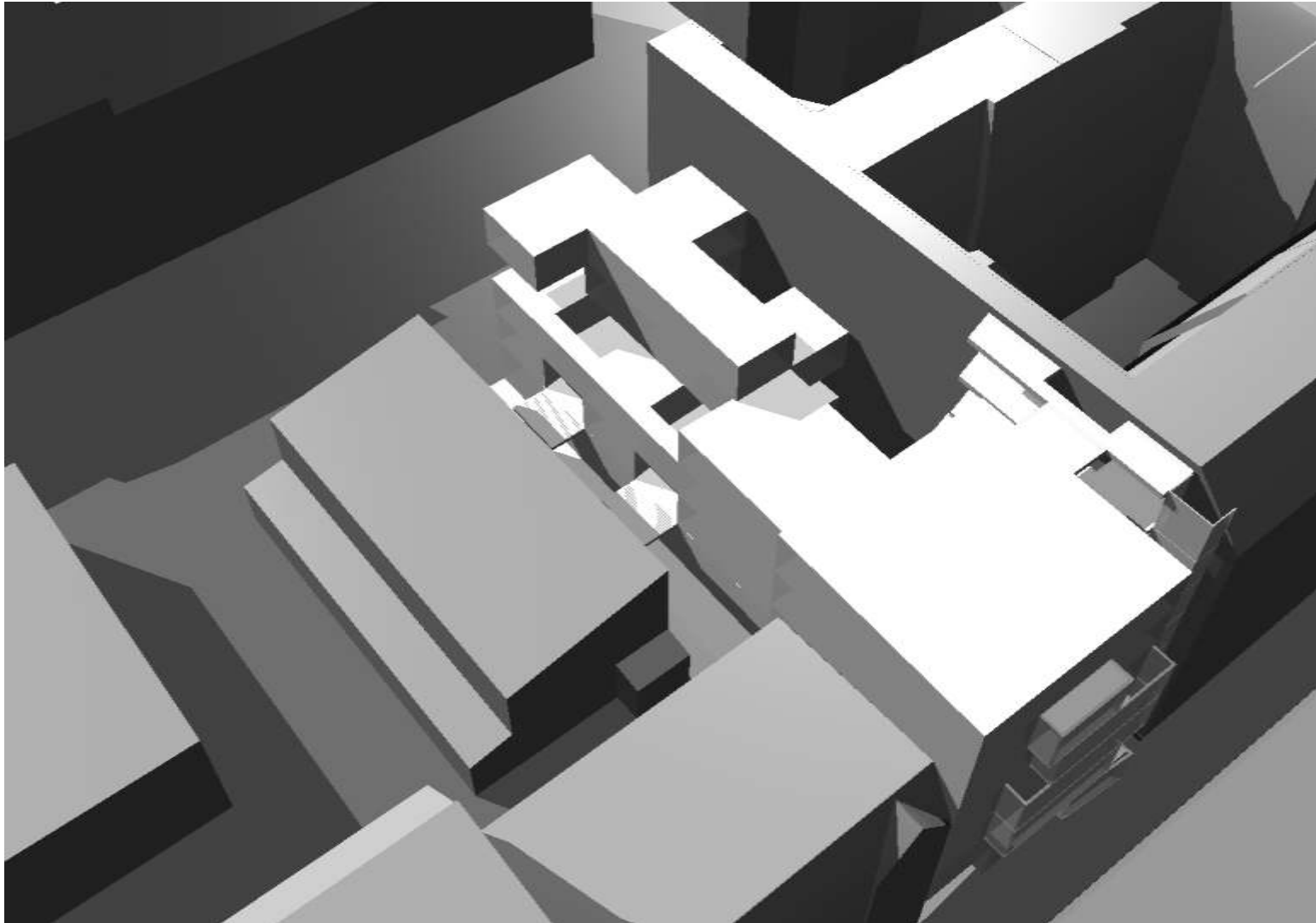




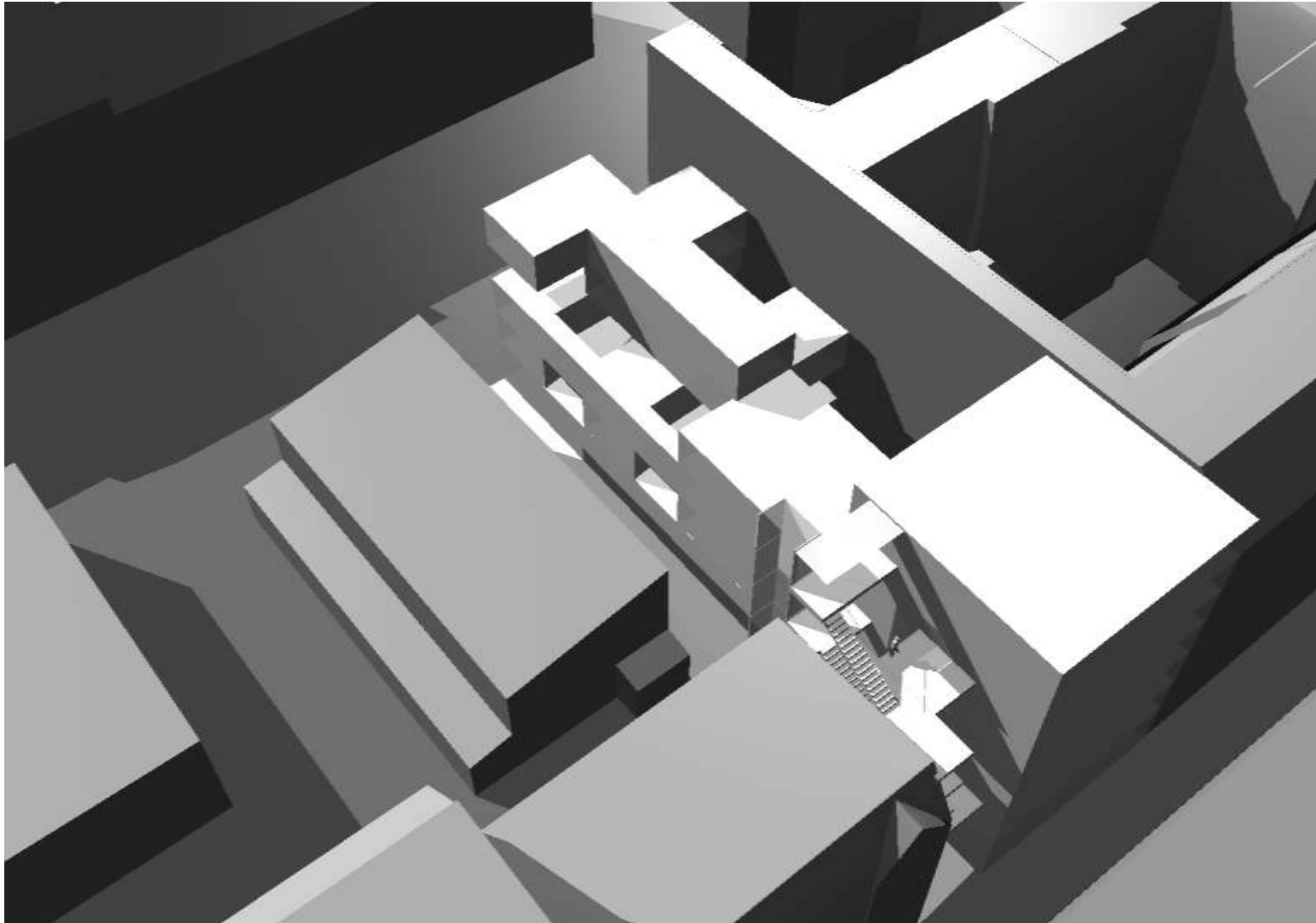




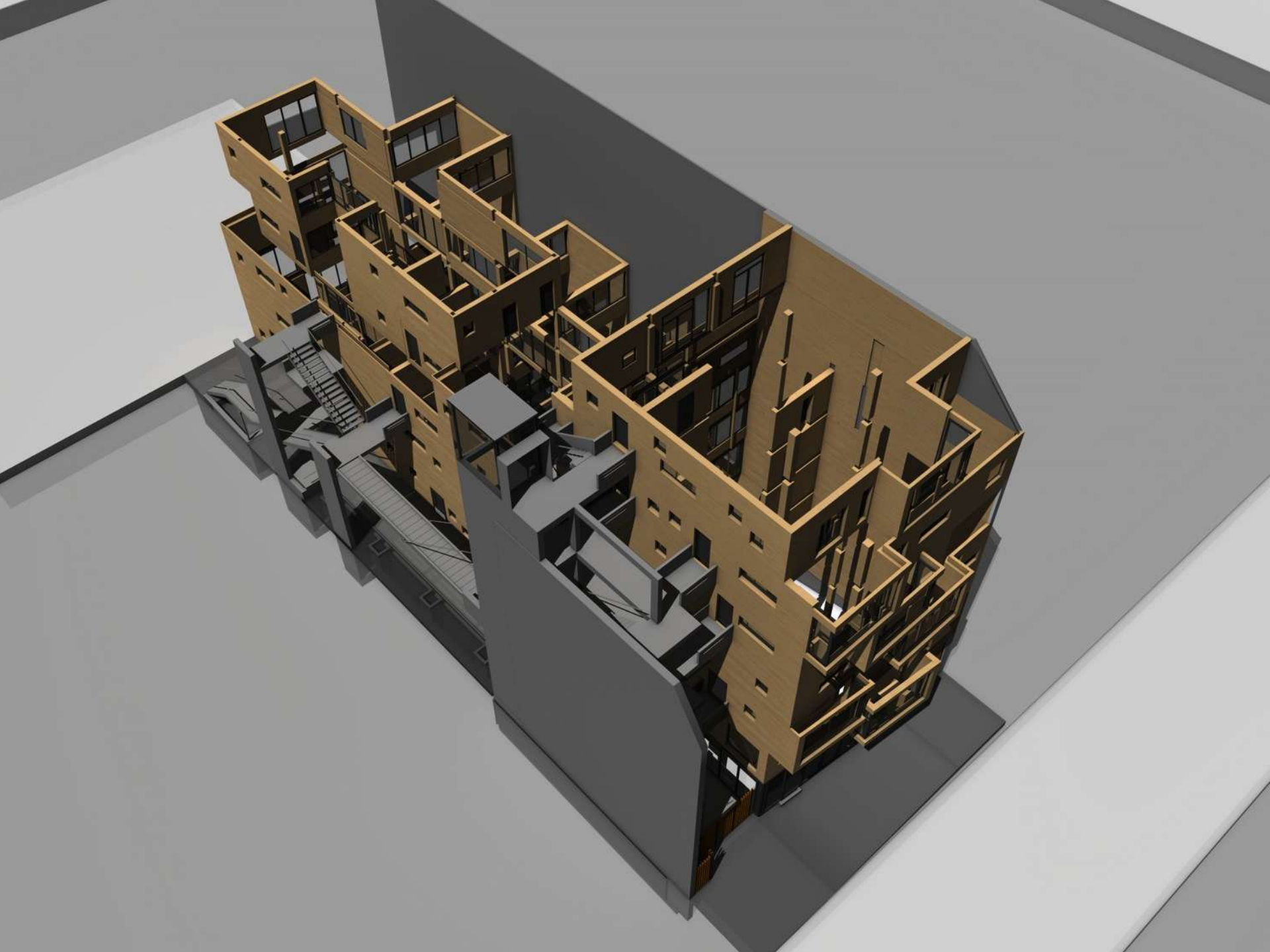




kaden+klingsbeil architekten

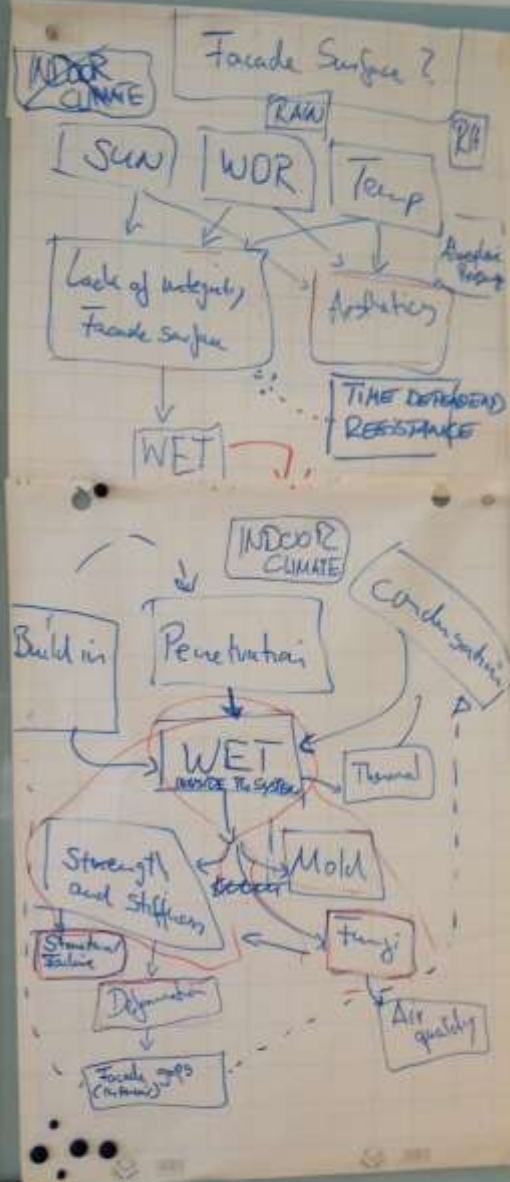










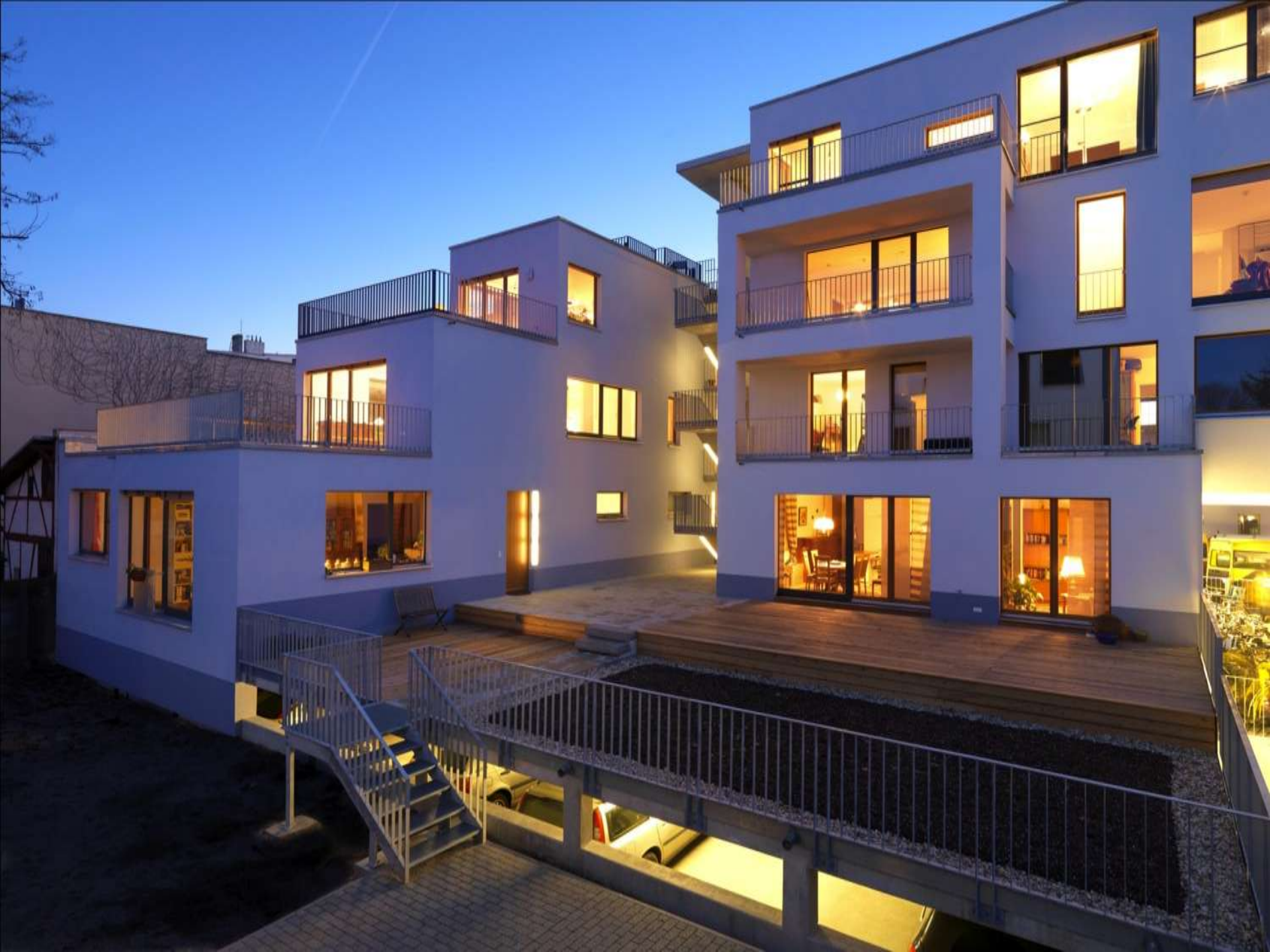


Consequences

- Replacement
- Repair (cost)
- Decrease of Value
- Decrease of use
- Reputation



COST EFFICIENT AND RESILIENT ENVELOPES























Design

PE +
CO₂-eq
generic

≥

Construction

PE +
CO₂-eq
specific

